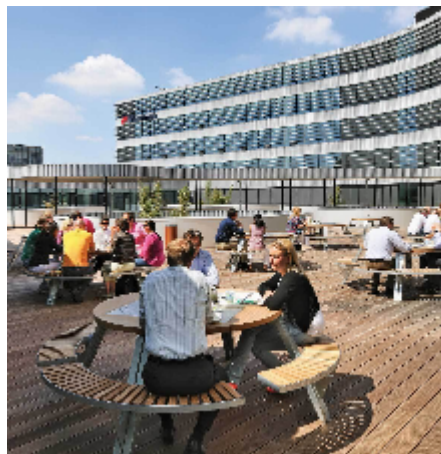
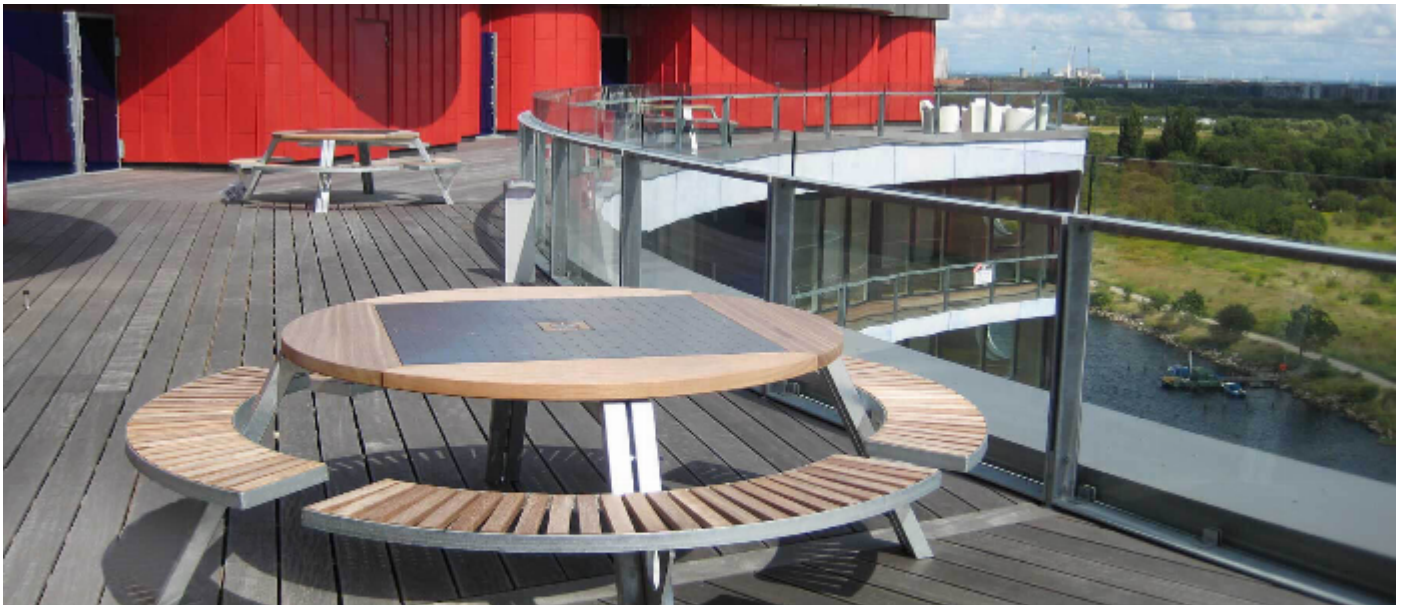
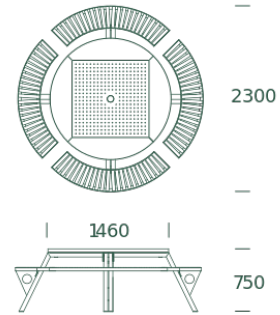


#121

# Roundtable

The Roundtable serves as a multifunctional picnic table for sitting, eating, and communication. The four seat quadrants are adjustable in height, providing different levels for adults as well as for small and tall kids



#121

# Roundtable

## Technical data

### Material

Frame: Hot galvanised steel. Tabletop: Iroko wood + stainless steel.

### Dimensions

Ø1460/2300mm / H750mm

### Fixation

For surface fixation. Brackets to be ordered separately.

### Accessories

Galvanised steel backrest (2 or 4), parasol, cushions/bolster (white or blue), cushions are custom-made.

### Maintenance

The wood requires no maintenance. Sun and wind will gradually alter the colour to a silvery grey and roughen the surface. Sand and oil yearly to maintain the smooth, golden surface.

### Product code

121 0100 RoundTable Iroko wood + hot galvanized / 189kg

900 E100 Floor fastening set for #121 (4 pcs.)

### Standard farver (Standard color)



Iroko  
NATURLIGT HÅRDTTRÆ