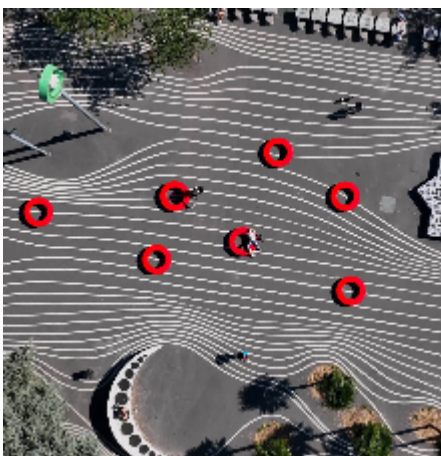
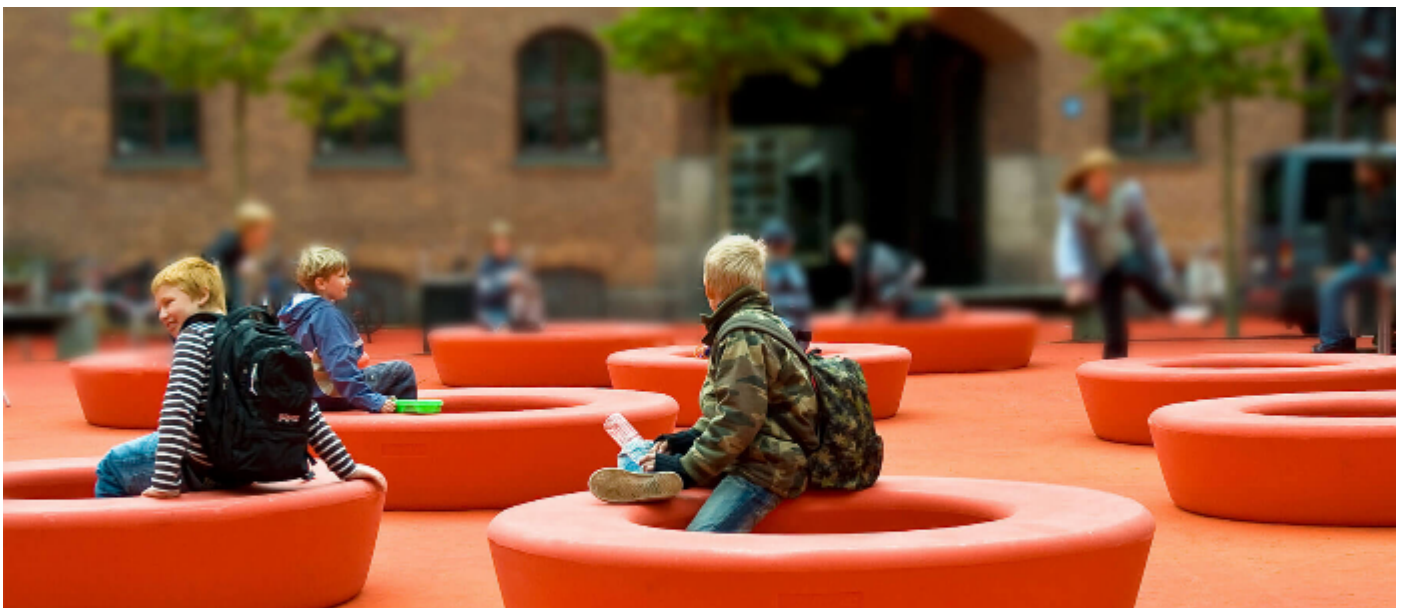
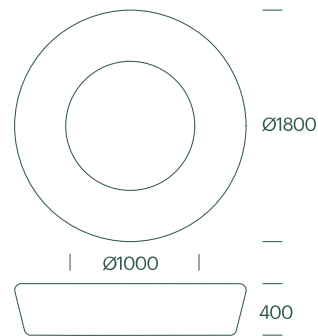


#135

Loop Circle

Loop Circle - a simple and flexible furniture for urban spaces, schools, and playgrounds. Loop Circle is an inclusive piece of furniture suitable for various social and cultural contexts. It invites informal gatherings, relaxation, or movement for 4-6 persons - whether it's inside or around the furniture



#135

Loop Circle

Technical data

Material

Rotation moulded polyethylene, 6-7 mm thick, dyed. Moulded in one piece. UV-resistant, stands up to weather, wear and tear. The material is suitable for granulation and recycling.

Surfaces and friction

The products have a textured/granulated surface due to abrasive blasting of the mold. This process enhances the friction and makes the surface less slippery.

Sustainability

Lifespan 30 years. 100% recyclable up to 7 times.

Carbon footprint: 230 kg.

LCA approved via Målbar (documentation see download).

Can also be delivered in 100% recycled, which is the Nordic Ecolabel.

Produced in Denmark.

Authentication

TÜV approved as playground equipment acc. EN1176.

Dimensions

Outside diameter Ø1800mm. Inside diameter Ø1000mm. H400mm. Volume: 540L. 4-6 seats inside / 6-8 seats outside. In the centre playground for 1-2 children.

Fixation

Fill with water (250 litres) / sand (250kg) through integrated plugs or surface/ground fixation. Brackets to be ordered separately.

Variant

Possibility of individually molded logo/name on the side of the product.

Recycled and ecolabelled*

Recycled version is made from 100% recycled polyethylene plastic, of which 85% comes from internal waste and production surplus, while 15% comes from polyethylene bags.

Recycled version is ecolabelled, promoting circular economy and fulfils UN's sustainable development goal no.12 – Responsible consumption and production.

Recycled version is available in anthracite variant, yet colour can vary from order to order.

Maintenance

This product withstands most cleaning agents and chemicals and can be cleaned using a high-pressure cleaner. The colour can be revived using vinyl cleaner or similar.

Family

Loop Arc, Loop Line, Loop Corner, Loop Light, Loop Cone, Loop Table, Loop Up.

Design protection

Registered EUIPO, design number 001436992-0002.

Item numbers

135 1001 Loop Circle red / 37kg.

135 1002 Loop Circle limegreen / 37kg.

135 1003 Loop Circle orange / 37kg.

135 1004 Loop Circle yellow / 37kg.

135 1011 Loop Circle sandstone / 37kg.

135 1017 Loop Circle blue / 37kg.

135 1015 Loop Circle pastel blue / 37kg.

135 1018 Loop Circle Olive green / 37kg.

135 1050 Loop Circle white / 37kg.

Colors (Approx. RAL)



#01 Red (standard color)
RAL 3020



#02 Lime Green (standard color)
RAL 120 70 60



#03 Orange (standard color)
RAL 2003



#04 Yellow (variant color)
RAL 1018



#11 Sandstone (variant color)
RAL 1019



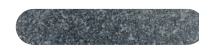
#17 Blue (variant color)
RAL 5010



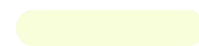
#15 Pastel Blue (variant color)
RAL 5024



#18 Olive Green (variant color)
RAL 6025



#20 Recycled anthracite
(variant color)



#50 White (variant color)
RAL 9003

135 1020 Loop Circle recycled anthracite / 37kg.
900 B021 Brackets for ground fixation.
900 B031 Brackets for surface fixation.
900 R200 Rubberblock.