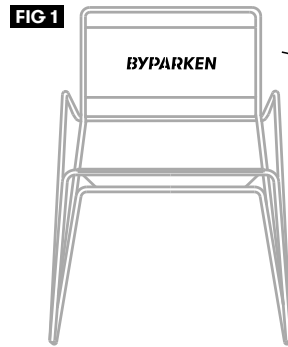


THE AMAGER CHAIR GUIDELINES: LOGO PLACEMENT

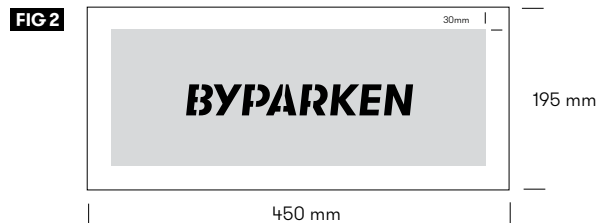
1. LOGO

The logo must be placed centered on the backrest - as illustrated in FIG 1.



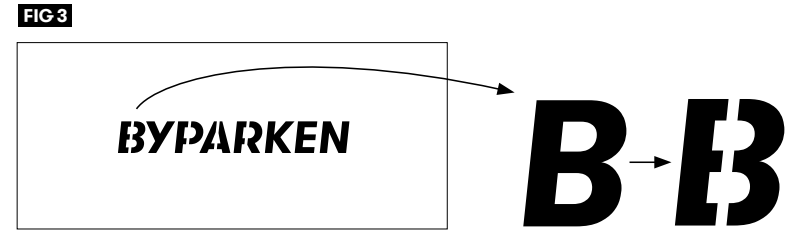
2. PROPORTIONAL DISTANCE

The logo will be placed with a distance to the edges of the backrest - depending on the size of the logo as illustrated in FIG 2.



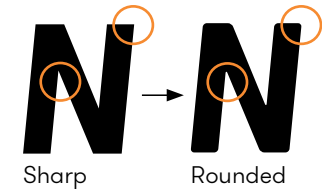
3. SUPPORT PINS

Support pins (min. 3mm) must be added to optimize the logo cut out. The support pins are added B, P, A and R in FIG 3.



4. SHARP EDGES

Please check the logo for sharp edges and make sure to round the corners using Adobe Illustrator or an equivalent vector adjustment software if necessary.



5. FILES & FORMATS

Please send the logo file in **pdf & STEP-format** to the following e-mail adress:

E am@out-sider.dk

T +45 3147 4833

